

# SilverScreen Low-E

Best Performing Solar Screen



## The ultimate solution for solar heat and light control

- Highest solar reflectance of 82% provides superb heat and light control
- Lowest-E fabric provides excellent insulation properties
- Openness factor of 2% or 4% provides clear view-through
- Excellent solution to reduce cooling and heating requirements in buildings
- Energy savings and indoor application result in low total cost of ownership

Verosol

# Transparencies

















202 2% OF Lowest-E Screen



205 4% OF



## Specifications SilverScreen Low-E

	<b>Thickness (mm)</b>	0.50				
	<b>Weight (g/m<sup>2</sup>)</b>	400				
	<b>Width (cm)</b>	310 (max.)				
	<b>Composition</b>	PVC / Glass – 64% / 36%				
	<b>Flame retardant standards</b>	NFP 92503 specification M1, NFPA 701, BS 5867 Part 2 Type B, AS 1530				
	<b>Environmental standards</b>	ISO 14001, Greenguard Gold, Ecospecifier				
		<b>White ED01 2% OF</b>	<b>White ED01 4% OF</b>	<b>Black EB01 4% OF</b>		
	<b>Solar reflection outside</b>	82%	77%	76%		
	<b>Light transmission</b>	3%	6%	4%		
	<b>Openness factor</b>	2%	4%	4%		
	<b>IR emissivity (metal side)</b>	0.05	0.16	0.16		
	<b>High performance glazing (reference glazing D EN 14501)</b>	<b>Glazing performance</b>	<b>White ED01 2% OF</b>	<b>White ED01 4% OF</b>	<b>Black EB01 4% OF</b>	<b>Performance improvement (max.)</b>
	<b>Light transmission</b>	60%	2%	4%	3%	97%
	<b>G-value / SHGC</b>	32%	12%	14%	14%	63%
	<b>U-value in W/m<sup>2</sup>K</b>	1.1	0.7	0.7	0.7	36%
	<b>Glare rating according to EN 14501</b>		3	3	3	

Optical properties are measured according to EN 14500, ISO 9050 & EN 410. High performance glazing is Reference glazing D from EN 14501. For more information about technical data, energy savings and worldwide distribution, refer to [www.verosol.com](http://www.verosol.com).  
Disclaimer: The technical data are based on average data and are subject to production tolerances.

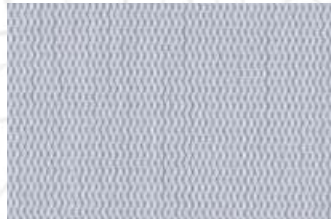


## 10 Colours

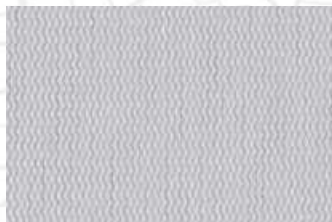
The colours shown may vary from the real colours.



White EDO1  
2% and 4%



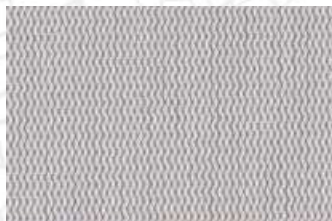
Light Grey EDO3  
2% and 4%



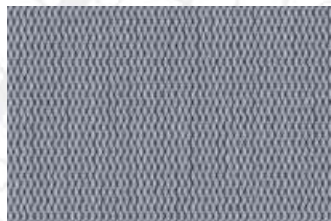
Beige EDO2  
2% and 4%



Misty Grey ECO1  
4%



Dark Beige EDO4  
4%



Steel Grey ECO2  
2% and 4%



Bronze EBO3  
2% and 4%



Dark Grey EBO2  
2% and 4%



Chocolate Brown EBO4  
4%



Black EBO1  
2% and 4%

# Verosol